



# TO CREATE A BETTER LIFE!

## 共创美好生活!

目前公司产品销售网络已遍布全国，为广大用户提供优质、高效、快捷的专业的营销管理队伍和服务。

公司秉承“诚信为本、以质求量、以质求效、全心服务”的经营理念，欢迎海内外有识之士加盟、贸易及洽谈。

ZHEJIANG QIAI TUBING INDUSTRY CO.,LTD, Which belong to QIAI GROUP CO.,LTD located in Shanxiahu Town, Zhuji City, Zhejiang, China. QIAI was established in 1996, close to Hangzhou, Shanghai, Ningbo and Yiwu, only 45km near to Xiaoshan International Airport.

We are the manufacturer of Stainless Steel Corrugated Flexible Gas hose, Stainless Steel Flexible Water hose, Air-Conditioning hose, PP-R pipes and fittings, Aluminum pipes and fittings, PE-RT pipes and fittings, Brass Fittings, Ball Valves and so on.

QIAI Based on excellent management, relying on the perfect quality system. All the productions passed by ISO9001 international quality management system, Certified by CE, and We are honored to gain the license of Special Equipment Manufacturing of Gas System. We established a national Laboratory. At present, the company's product sales network has spread all over the world, establish and improve the quality, efficient and fast professional marketing management team and service support system for the vast number of users.

Company with "honesty, quality and service" as the tenet, welcome to join us!

## 公司简介 COMPANY PROFILE

奇爱集团有限公司旗下浙江奇爱管业有限公司是一家市级规模企业，创建于 1996 年，座落在风景秀丽的古越文化发源地西施故里诸暨市山下湖镇，浙赣铁路和杭金衢高速公路贯穿而过，北临省会杭州、上海，东临宁波，南临义乌国际小商品市场，距萧山国际机场仅 45 公里，地理位置优越，交通方便。

公司专业生产“奇爱”牌不锈钢燃气波纹软管、水暖不锈钢波纹软管、空调不锈钢管、PP-R 管材管件、铝塑管及管件、PE-RT 管材管件、铝塑 PP-R 管、水暖铜管件、分水器、铜塑阀门等产品。公司以良好的管理为依托，依靠完善的质量体系。本公司生产的所有产品已通过 ISO9001 国际质量管理体系，获得 CE 欧盟质量认证及燃气类特种设备制造许可证，并设有国家级实验室，所有产品都由中国平安保险公司承保。我司先后被评为浙江省“重合同、守信用”单位、市级著名商标，市级名牌产品。



INNOVATION /  
QUALITY / COST / SERVICE

创新 / 品质 / 成本 / 服务



# CONTENTS

## 目录

- 18 阀门系列 BALL VALVE SERIES / 07-13
- 28 水暖系列 BRASS FITTING SERIES / 14-20
- 38 铝塑管铜接头系列 ALUMINIUM PIPE SERIES / 21-23
- 38 管材系列 PIPE SERIES / 24-26
- 48 PP-R管材系列 PPR PIPE SERIES / 27
- 48 PP-R管件系列 PPR FITTING SERIES / 28-34
- 58 工具系列 TOOLS&ACCESSORIE SERIES / 35-40

# HONORARY CERTIFICATE

## 企业资质

# TESTING CENTER

## 实验检测



多达27+  
项实用新型专利(27+ Practical patent)



获欧盟CE认证



获ISO9001:2008认证



获ISO9001:2008认证



获浙江省涉及饮用水卫生安全产品卫生许可批准



获浙江省涉及饮用水卫生安全产品卫生许可批准



获浙江省涉及饮用水卫生安全产品卫生许可批准



# PRODUCTION STRENGTH

生产实力



# PACKING INSPECTION

包装检验



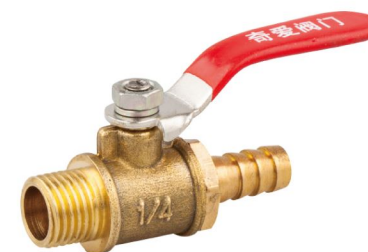
# GA18 VALVE SERIES

## 18 阀门系列



GA-1802

一外一插球阀  
Male Hose Valve



规格 Spec  
M1/4×φ8  
M1/4×φ10  
M3/8×φ8  
M3/8×φ10

GA-1803

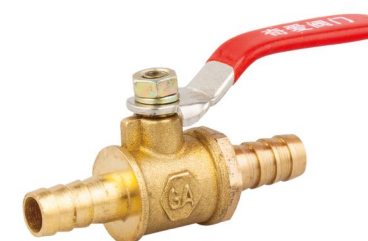
一内一插球阀  
Female Hose Valve



规格 Spec  
F1/4×φ8  
F1/4×φ10  
F3/8×φ8  
F3/8×φ10

GA-1804

二插球阀  
Hose Ball Valve



规格 Spec  
φ8×φ8  
φ10×φ10

GA-1805

一内一外球阀  
Male And Female Ball Valve



规格 Spec  
M1/4×F1/4  
M3/8×F3/8

GA-1806

二内球阀  
Female Ball Valve



规格 Spec  
F1/4×F1/4  
F3/8×F3/8

GA-1807

内牙双插软管球阀  
Female Hose Valve



规格 Spec  
F1/2×φ10

GA-1808

二外球阀  
Male Ball Valve



规格 Spec  
M1/4×M1/4  
M3/8×M3/8

GA-1809

外牙蝶柄煤气阀  
Male Butterfly Valve



规格 Spec  
M1/2×φ8  
M1/2×φ10

GA-1810

内牙蝶柄煤气阀  
Female Butterfly Valve



规格 Spec  
F1/2×φ8  
F1/2×φ10

GA-1811

外牙煤气球阀  
Male Gas Valve



规格 Spec  
M1/2×φ8  
M1/2×φ10

GA-1819

内外直阀  
Female And Male Straight Valve



规格 Spec  
F1/2×M1/2

GA-1820

插管煤气阀  
Gas Valve



规格 Spec  
φ1216×φ10

GA-1812

内牙煤气球阀  
Female Gas Valve



规格 Spec  
F1/2×φ8  
F1/2×φ10

GA-1813

外牙双叉软管球阀  
Male Hose Valve



规格 Spec  
M1/2×φ10

GA-1821

内牙球阀  
Female Ball Valve



规格 Spec  
φ1216×F1/2  
φ1620×F1/2  
φ1620×F3/4  
φ2025×F3/4  
φ2025×F1"  
φ2632×F1"

GA-1822

二内球阀  
Female Ball Valve



规格 Spec  
F1/2  
F3/4  
F1

GA-1815

内外牙蝶柄球阀  
Male And Female Butterfly Valve



规格 Spec  
F1/2×M1/2

GA-1816

一内一外球阀  
Male And Female Ball Valve



规格 Spec  
F1/2×M1/2

GA-1823

二内球阀 (大流量)  
Female Ball Valve



规格 Spec  
F3/8  
F1/2  
F3/4  
F1"

GA-1824

(横式)自动排气阀  
Automatic Lateral Valve



规格 Spec  
M1/2  
M3/4  
M1"

GA-1817

外牙球阀  
Male Ball Valve



规格 Spec  
φ1216×M1/2  
φ1620×M1/2  
φ1620×M3/4  
φ1625×M3/4  
φ2025×M1  
φ2632×M1

GA-1818

等径球阀  
Equal Ball Valve



规格 Spec  
φ1216  
φ1620  
φ2025  
φ2632

GA-1825

(直式)自动排气阀  
Automatic Erect Valve



规格 Spec  
M1/2  
M3/4  
M1"

GA-1826

过滤器  
Filter



规格 Spec  
F1/2  
F3/4  
F1"  
F1¼

GA-1827

截止阀  
Check Valve



规格 Spec  
F1/2  
F3/4  
F1"  
F1¼  
F1½  
F2"

GA-1828

止回阀  
Non-Return Valve



规格 Spec  
F1/2  
F3/4  
F1"  
F1¼  
F1½  
F2"

GA-1838

茶桶龙头  
Water Faucet



规格 Spec  
M1/2  
M3/8

GA-1843

1/2 软管水龙头  
Hose Faucet



规格 Spec  
M1/2xΦ10

GA-1829

立式止回阀  
Erect Check Valve



规格 Spec  
F1/2  
F3/4  
F1"

GA-1830

闸阀  
Gate Valve



规格 Spec  
F1/2  
F3/4  
F1"  
F1¼  
F1½  
F2"

GA-1833

铜水龙头  
Copper Faucet



规格 Spec  
M1/2

GA-1852

塑料水龙头  
Plastic Faucet



规格 Spec  
M1/2

GA-1831

铜三角阀  
Angle Valve



规格 Spec  
M1/2  
M1/2(加长long)  
M3/4

GA-1832

异径三角阀  
Reducing Angle Valve



规格 Spec  
3/4x1/2

GA-1870

二内蝶柄球阀  
Female Butterfly Valve



规格 Spec  
F1/2

GA-1871

暖气内牙球阀  
Female Heating Valve



规格 Spec  
1216x1/2F  
1620x3/4F

GA-1834

热水龙头(加长)  
Water Faucet(long)



规格 Spec  
M1/2x3/4  
M3/8x3/4

GA-1837

热水龙头  
Hot Water Faucet



规格 Spec  
M1/2  
M3/4

GA-1872

暖气外牙球阀  
Male Heating Valve



规格 Spec  
1216x1/2M  
1620x3/4M

GA-1873

暖气等径球阀  
Heating Ball Valve



规格 Spec  
1216  
1620  
2025

GA-1874

壁挂炉专用阀  
Wall-mounted Boiler Valve



规格 Spec  
1216x1/2F  
1620x3/4F

GA-1875

角阀式暖气阀  
Radiator Valve



规格 Spec  
1216x1/2  
1620x3/4

GA-1876

壁挂炉专用阀  
Wall-mounted Boiler Valves



规格 Spec  
20x3/4F 带过滤器  
20x3/4F  
16x1/2F  
16x3/4F  
16x1/2F

GA-1877

地暖分水器组件  
Floor Heating Valves



规格 Spec  
M1/2  
M3/4  
M1"

GA-1846

三通旋塞  
Tee Faucet



规格 Spec  
F1/2(普通)  
F1/2(尼龙王)

GA-1878

直式温控调节阀  
Temperature Control Erect Valve



规格 Spec  
25x3/4  
32x1"

GA-1879

角式温控调节阀  
Temperature Control Angle Valve



规格 Spec  
25x3/4  
32x1"

# GA28 BRASS FITTINGS SERIES

## 28 水暖铜管件系列





GA-2801

内牙三通  
Female Tee



规格 Spec

F1/8  
F1/4  
F3/8  
F1/2  
F3/4  
F1"  
F1¼  
F1½  
F2"

GA-2802

内牙弯头  
Female Elbow



规格 Spec

F1/4  
F3/8  
F1/2  
F3/4  
F1"  
F1¼  
F1½  
F2"

GA-2809

内牙异径弯头  
Female Reducing Elbow



规格 Spec

F3/4xF1/2  
F1"xF1/2  
F1"xF3/4

GA-2810

内外牙三通  
Male And Female Tee



规格 Spec

M1/2xF1/2xM1/2

GA-2803

内牙四通  
Cross



规格 Spec

F1/2  
F3/4

GA-2804

异径三通  
Reducing Tee



规格 Spec

F¾xF1/2xF¾  
F1"xF½xF1"  
F1"xF¾xF1"

GA-2811

外牙三通  
Male Tee



规格 Spec

M1/2  
M3/4xM1/2  
M1xM1/2  
M1xM3/4

GA-2812

外牙弯头  
Male Elbow



规格 Spec

M1/4  
M3/8  
M1/2  
M1/2 长 (long)

GA-2805

内外牙三通  
Male And Female Tee



规格 Spec

F1/2xM1/2xF1/2

GA-2806

墙角三通  
Wall Corner Tee



规格 Spec

F1/2

GA-2813

异径管古  
Female Reducnig Socket



规格 Spec

F3/4xF1/2  
F1"xF1/2  
F1"xF3/4

GA-2814

管古  
Female Socket



规格 Spec

F1/2  
F3/4  
F1"  
F1¼  
F1½  
F2"

GA-2807

三叉三通  
Y Shape Tee



规格 Spec

F1/2

GA-2808

内外牙弯头  
Male And Female Elbow



规格 Spec

FM1/4(90°)  
FM1/2(90°)  
F3/4xM1/2  
FM1/2  
FM3/4  
FM1"

GA-2815-1

二外一内三通  
Male And Female Tee



规格 Spec

M½xM½xF½

GA-2815-2

二内一外三通  
Male And Female Tee



规格 Spec

F½xF½xM½

GA-2816

外丝堵头  
Male Plug



规格 Spec

M3/4
M1"
M1 1/4
M1 1/2

GA-2817

内丝堵头  
Female Cap



规格 Spec

F1/2
F3/4
F1"

GA-2824

内外接  
Male And Female Socket



规格 Spec

F1/4xM1/8	FM1/2x50mm
F1/4xM1/4	FM1/2x70mm
F3/8xM1/8	FM3/4
F3/8xM1/4	F3/4xM1/2
F1/2xM3/8	FM1"
F1/2xM1/4	F1"xM1/2
FM1/2x26mm (短 Short)	F1"xM3/4
FM1/2x31mm (长 Long)	
FM1/2(宽边 Wide)	
FM1/2(厚 Heavy)	

GA-2825

异径对接  
Reducing Nipple



规格 Spec

M1/4xM1/8	M1 1/4xM1/2
M3/8xM1/4	M1 1/4xM3/4
M1/2xM1/4	M1 1/4xM1"
M1/2xM3/8	M1 1/2xM1 1/4
M3/4xM1/2	M2"xM1 1/2
M1"xM1/2	M2 1/2xM2"
M1"xM3/4	

GA-2818

铜活接  
Brass Union



规格 Spec

F3/8
F1/2
F3/4
F1"
F1 1/4
F1 1/2
F2"

GA-2819

外丝出气嘴  
Male Hose Nipple



规格 Spec

M1/8xφ6	M1/2xφ16
M1/8xφ8	M1/2xφ19
M1/8xφ10	M3/4xφ8
M1/4xφ6	M3/4xφ10
M1/4xφ8	M3/4xφ12
M1/4xφ10	M3/4xφ14
M1/4xφ12	M3/4xφ16
M3/8xφ6	M3/4xφ19
M3/8xφ8	M3/4xφ25
M3/8xφ10	M1"xφ19
M3/8xφ12	M1"xφ25
M3/8xφ14	M1"xφ32
M3/8xφ16	M1 1/4xφ32
M1/2xφ6	M1 1/4xφ38
M1/2xφ8	M1 1/2xφ32
M1/2xφ10	M1 1/2xφ40
M1/2xφ12	M2xφ50
M1/2xφ14	

GA-2826

内六角内外接  
Male And Female Connector



规格 Spec

M 1/2x F1/2x10mm
M 1/2x F1/2x15mm
M 1/2x F1/2x20mm
M 1/2x F1/2x25mm
M 1/2x F1/2x30mm

GA-2827

猪嘴  
Auto-drainer



规格 Spec

G1/2(铜 Brass)
G1/2(铁 Iron)

GA-2820

内丝出气嘴  
Female Hose Nipple



规格 Spec

F1/8xφ6	F1/2xφ10
F1/8xφ8	F1/2xφ12
F1/8xφ10	F1/2xφ14
F1/4xφ6	F1/2xφ16
F1/4xφ8	F1/2xφ19
F1/4xφ10	F3/4xφ10
F3/8xφ6	F3/4xφ12
F3/8xφ8	F3/4xφ14
F3/8xφ10	F3/4xφ16
F1/2xφ6	F3/4xφ19
F1/2xφ8	

GA-2821

压铸补心  
Reducing Bush



规格 Spec

M1/4x F1/8	M1 1/4" x F1"
M3/8x F1/8	M1 1/4" x F1/2"
M3/8x F1/4	M1 1/2" x F1/2"
M1/2x F1/8	M1 1/2" x F3/4"
M1/2x F1/4	M1 1/2" x F1"
M1/2x F3/8	M1 1/2" x F1 1/4"
M3/4x F1/8	M2" x F1 1/2"
M3/4x F3/8	M2" x F1"
M3/4x F1/2	M2" x F1 1/4"
M1" x F1/2	M2 1/2" x F2"
M1" x F3/4	M3" x F2 1/2"
M1 1/4" x F3/4	

GA-2828

弯头出气嘴  
Male Hose Elbow



规格 Spec

M1/2xφ10
----------

GA-2829

压铸丁字三通  
Hose Tee



规格 Spec

φ6
φ8
φ10

GA-2822

六角通心  
Female Socket



规格 Spec

F1/8
F1/4
F3/8
F1/2

GA-2823

外丝对接  
Nipple socket



规格 Spec

M1/8	M1/2x70mm
M1/4	M1/2x100mm
M3/8	M3/4x35mm
M 1/2x28mm(heavy)	M3/4x50mm
M 1/2x28mm(light)	M3/4x70mm
M 1/2x32mm	M3/4x100mm
M 1/2x35mmGA	M1"
M 1/2x35mm 铜棒	M1 1/4
M 1/2x35mmGA 压铸	M1 1/2
M 1/2x35mm	M2"
M 1/2x50mm	M2 1/2"

GA-2830

压铸人字三通  
Y-Shape Tee



规格 Spec

φ8
φ10

GA-2831

直通  
Hose Connector



规格 Spec

φ6
φ8
φ10
φ12
φ14
φ16
φ19

GA-2832

冷风门  
Male Connector



规格 Spec  
M10x1x28mm  
M10x1x35mm

GA-2833

并圈  
Brass Clasp



规格 Spec  
F3/8  
F1/2  
F3/4

GA-2839

定位单开关  
Position Switch



规格 Spec  
M1/4xφ10 大  
M3/8xφ10 小  
M1/2xφ10 大

GA-2841

外牙嵌件  
Male Insert For PPR Fittings



规格 Spec  
M3/8-M4"

GA-2834

水表接头  
Water Meter Connector



规格 Spec  
1/2 煤气表接头 Gas  
M1/2  
M3/4  
M1"  
M1 1/4"  
M1 1/2"  
M2"

GA-2837

外丝堵头  
Male Plug



规格 Spec  
M1/8  
M1/4  
M3/8  
M1/2

GA-2842

内牙嵌件  
Female Insert For PPR Fittings



规格 Spec  
F3/8-F4"

GA-2845

压铸偏心弯  
Mixer Connector



规格 Spec  
M1/2xM3/4

GA-2835

太阳能活接弯头  
Elbow Of Solar Power



规格 Spec  
FM1/2

GA-2836

太阳能活接三通  
Tee Of Solar Power



规格 Spec  
M1/2

GA-2846

冲水枪头  
Water Sprayer



规格 Spec  
M1/2

GA-2847

45° 弯头  
45° Female Elbow



规格 Spec  
F1/2  
F3/4  
F1"

GA-2838

三叉开关  
Trigeminal Switch



规格 Spec  
φ8  
φ10

GA-2838-1

三叉 (大羊角)  
Double Fork Switch



规格 Spec  
M1/2xφ8  
M1/2xφ10

GA-2847-1

角墙弯头  
Corner Seated Elbow



规格 Spec  
F1/2xF1/2

GA-2852

90° 直角三通  
90° Hose Elbow



规格 Spec  
φ10

# GA38 BRASS FITTINGS FOR PEX PIPE

## 38 铝塑管铜接头系列



GA-3801

内牙三通  
Female Tee



规格 Spec

T1216x1/2Fx1216  
T1418x1/2Fx1418  
T1620x1/2Fx1620  
T1620x3/4Fx1620  
T2025x1/2Fx2025  
T2025x3/4Fx2025  
T2025x1"Fx2025  
T2632x3/4Fx2632  
T2632x1"Fx2632

GA-3802

异径三通  
Reducing Tee



规格 Spec

T1216x1418x1216  
T1216x1620x1216  
T1418x2025x1418  
T1620x1216x1620  
T1620x1418x1620  
T2025x1216x2025  
T2025x1418x2025  
T2025x1620x2025  
T2632x1216x2632  
T2632x1620x2632  
T2632x2025x2632

GA-3803

等径三通  
Equal Tee



规格 Spec

T1216  
T1418  
T1620  
T2025  
T2632

GA-3804

外牙三通  
Male Tee



规格 Spec

T1216xM1/2x1216  
T1216xM3/4x1216  
T1418xM1/2x1418  
T1620xM1/2x1620  
T1620xM3/4x1620  
T2025xM1/2x2025  
T2025xM3/4x2025  
T2632xM1/2x2632  
T2632xM3/4x2632  
T2632xM1"x2632

GA-3806

带座内牙弯头  
Female Wall Plated Elbow



规格 Spec

ZL1216x1/2F  
ZL1418x1/2F  
ZL1620x1/2F

GA-3807

内牙直接  
Female Socket



规格 Spec

S1216x1/2F S2025x1/2F  
S1216x3/4F S2025x3/4F  
S1216x1" F S2025x1" F  
S1418x1/2F S2632x1/2F  
S1418x3/4F S2632x3/4F  
S1620x1/2F S2632x1" F  
S1620x3/4F S2632x1 1/4" F  
S1620x1" F

GA-3808

内牙弯头  
Female Elbow



规格 Spec

L1216x1/2F  
L1216x3/4F  
L1418x1/2F  
L1418x3/4F  
L1620x1/2F  
L1620x3/4F  
L1620x1" F  
L2025x1/2F  
L2025x3/4" F  
L2025x1" F  
L2632x3/4F  
L2632x1" F

GA-3809

等径直接  
Equal Socket



规格 Spec

S1216  
S1418  
S1620  
S2025  
S2632

**GA-3810**



等径弯头  
Equal Elbow

规格 Spec

- L1216
- L1418
- L1620
- L2025
- L2632

**GA-3811**



外牙弯头  
Male Elbow

规格 Spec

- L1216x1/2M
- L1216x3/4M
- L1418x1/2M
- L1418x3/4M
- L1620x1/2M
- L1620x3/4M
- L1620x1" M
- L2025x1/2M
- L2025x3/4M
- L2025x1" M
- L2632x3/4M
- L2632x1" M

**GA-3812**



异径弯头  
Reduce Elbow

规格 Spec

- L1216x1418
- L1216x1620
- L1216x2025
- L1418x1620
- L1418x2025
- L1620x2025
- L1620x2632
- L2025x2632

**GA-3813**



外牙直接  
Male Socket

规格 Spec

- |            |             |
|------------|-------------|
| S1216x1/2M | S2025x1/2M  |
| S1216x3/4M | S2025x3/4M  |
| S1418x1/2M | S2025x1" M  |
| S1418x3/4M | S2632x1/2M  |
| S1620x1/2M | S2632x3/4M  |
| S1620x3/4M | S2632x1" M  |
| S1620x1" M | S2632x1¼" M |

**GA-3814**



异径直接  
Reducing Socket

规格 Spec

- S1216x1620
- S1216x2025
- S1216x2632
- S1418x1216
- S1418x1620
- S1418x2025
- S1418x2632
- S1620x2025
- S1620x2632
- S2025x2632

**GA-3822**



十字四通  
Cross

规格 Spec

- φ1216
- φ1620

**GA-3815**



分水器  
Valve Manifold

规格 Spec

- 3/4Mx16x3/4Fx2
- 3/4Mx16x3/4Fx3
- 3/4Mx16x3/4Fx4

**GA-3816**



三路分水器  
3 Way Valve Manifold

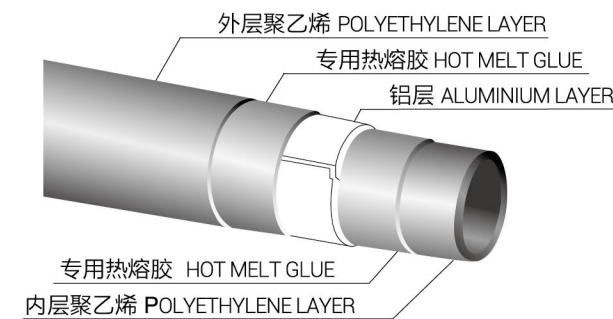
规格 Spec

- M3/4x1216xM3/4x3
- M3/4x1620xM3/4x3
- M1x1620xM1x3
- M1x1216xF1x3
- M1x1620xF1x3



**GA-3818**  
**ALUMINIUM-PLASTIC PIPE SERIES**  
铝塑管系列

结构示意图  
STRUCTURE SCHEMATIC DIAGRAM



规格  
SPECIFICATION

冷水管 (PE-AL-PE)		热水管 (PE-AL-PEX)		热水管 (PEX-AL-PEX)	
规格mm (Spec)	压力PN (60°C)	规格mm (Spec)	压力PN (95°C)	规格mm (Spec)	压力PN (95°C)
φ1216	10Bar	φ1216	10Bar	φ1216	10Bar
φ1418	10Bar	φ1418	10Bar	φ1418	10Bar
φ1620	10Bar	φ1620	10Bar	φ1620	10Bar
φ2025	10Bar	φ2025	10Bar	φ2025	10Bar
φ2632	10Bar	φ2632	10Bar	φ2632	10Bar



## GA3818-1 ALUMINIUM PP-R PIPE 铝塑 PP-R 管系列

### 规格与包装数量 SPECIFICATIONS AND PACKING QUANTITY

#### 铝塑 PP-R 管材 Aluminium plastic pp-r pipes

规格(Spec)	包装M/件
Φ20x3.1	280
Φ25x3.2	200
Φ32x4.3	120
Φ40x5.2	80
Φ50x5.7	56
Φ63x7.5	32

### 铝塑管 PPR 管主要特点

#### ADVANTAGES OF ALUMINIUM PP-R PIPE

PPR 铝塑复合管由五层结构，中间层为薄壁铝层，外层是 PP-R，内层是 PE-RT，层与层之间采用进口热熔胶，通过高温高压挤出，五层多元有机复合，耐腐蚀、质量轻、机械强度高、耐热性能好、不结垢、使用寿命长等优良特点。

铝塑 PPR 管集普通 PPR 管和金属管材的优点于一体，同时兼具塑料管的卫生性、耐腐蚀性，以及金属管的防紫外线、不渗氧、明装不变形等特性，使之具有更高的强度和更稳定的机械性能。



### 规格 Spec

Φ16x2.0x200mm	Φ16x2.0x300mm
Φ20x2.0x200/300mm	Φ20x2.3x300mm
Φ25x2.3x100/200mm	Φ25x2.5x200mm

## GA-3818-2 PE-RT PIPE SERIES PE-RT 地暖管系列



# GA-4801 PP-R PIPE SERIES PP-R 管材系列



# GA48 PP-R FITTINGS SERIES 48 PP-R管件系列



## 规格与包装数量 SPECIFICATIONS AND BALE CAPACITY

PP-R 管材 PP-R Pipe				PP-R 管材 PP-R Pipe				
冷水管 (cold water)		冷水管 (cold water)		热水管 (hot water)		热水管 (hot water)		
规格 Spec	包装 M/ 件	规格 Spec	包装 M/ 件	规格 Spec	包装 M/ 件	规格 Spec	包装 M/ 件	
PN=1.25 (Mpa)	Φ20×1.9	320	PN=1.60 (Mpa)	Φ20×2.3	320	PN=2.0 (Mpa)	Φ20×2.8	320
	Φ25×2.3	200		Φ25×2.8	200		Φ20×3.4	320
	Φ32×3.0	120		Φ32×3.6	120		Φ25×4.2	200
	Φ40×3.7	80		Φ40×4.5	80		Φ32×4.4	120
	Φ50×4.6	56		Φ50×5.6	56		Φ40×5.5	80
	Φ63×5.8	32		Φ63×7.1	32		Φ50×6.9	56
	Φ75×6.9	28		Φ75×8.4	28		Φ63×8.7	32
	Φ90×8.2	20		Φ90×10.1	20		Φ75×10.1	28
	Φ110×10.3	12		Φ110×12.2	12		Φ90×12.3	20
Φ160×14.6	4	Φ160×17.1	4	Φ110×15.1	12	Φ20×3.4	320	
				Φ160×21.7	4	Φ25×4.2	200	
						Φ32×5.4	120	
						Φ40×6.7	80	
						Φ50×8.4	56	
						Φ63×10.5	32	
						Φ75×12.5	28	
						Φ90×15.0	20	
						Φ110×18.3	12	

GA-4802

直接  
Socket



规格 Spec
S20
S25
S32
S40
S50
S63
S75
S90
S110
S160

GA-4803

弯头  
90° Elbow



规格 Spec
L20
L25
L32
L40
L50
L63
L75
L90
L110
L160

GA-4809

内牙弯头  
Female Elbow



规格 Spec
L20x1/2F
L20x3/4F
L25x1/2F
L25x3/4F
L32x1/2F
L32x3/4F
L32x1"F
L40x1"F
L40x1¼F
L50x1½F
L63x2"F

GA-4810

外牙弯头  
Male Elbow



规格 Spec
L20x1/2M
L20x3/4M
L25x1/2M
L25x3/4M
L32x1/2M
L32x3/4M
L32x1"M
L40x1"M
L40x1¼M
L50x1½M
L63x2"M

GA-4804

三通  
Tee



规格 Spec
T20
T25
T32
T40
T50
T63
T75
T90
T110
T160

GA-4804-1

四通  
Cross



规格 Spec
T20
T25
T32
T40
T50
T63

GA-4811

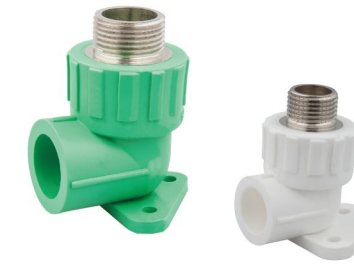
带座内牙弯头  
Female Seated Elbow



规格 Spec
ZL20x1/2F
ZL25x1/2F
ZL25x3/4F

GA-4812

带座外牙弯头  
Male Seated Elbow



规格 Spec
ZL20x1/2M
ZL25x3/4M

GA-4805

异径三通  
Reducing Tee



规格 Spec
T25x20x25
T25x20x32
T32x25x32
T40x20x40
T40x25x25
T40x32x40
T50x20x50
T50x25x50
T50x32x50
T50x40x50
T63x20x63
T63x25x63
T63x32x63
T63x40x63
T63x50x63
T75x25x75
T75x32x75
T75x40x75
T75x50x75
T75x63x75
T90x40x90
T90x50x90
T90x63x90
T90x75x90
T110x50x110
T110x63x110
T110x75x110
T110x90x110

GA-4806

异径直接  
Reducing Socket



规格 Spec
S25x20
S32x20
S32x25
S40x20
S40x25
S40x32
S50x20
S50x25
S50x32
S50x40
S63x20
S63x25
S63x32
S63x40
S63x50
S75x32
S75x40
S75x50
S75x63
S90x32
S90x40
S90x50
S90x63
S90x75
S110x50
S110x63
S110x75
S110x90
S160x90
S160x110

GA-4813

内牙三通  
Female Tee



规格 Spec
T20x1/2F
T20x3/4F
T25x1/2F
T25x3/4F
T32x1/2F
T32x3/4F
T32x1"F
T40x1¼F
T50x1½F
T63x2"F

GA-4814

外牙三通  
Male Tee



规格 Spec
T20x1/2M
T20x3/4M
T25x1/2M
T25x3/4M
T32x1/2M
T32x3/4M
T32x1"M
T40x1¼M
T50x1½M
T63x2"M

GA-4807

外牙直接  
Male Adaptor



规格 Spec
S20x1/2M
S20x3/4M
S25x1/2M
S25x3/4M
S32x1/2M
S32x3/4M
S32x1"M
S40x1"M
S40x1¼M
S50x1½M
S63x2"M
S75x2½M
S90X3 "M
S110X4 "M

GA-4808

内牙直接  
Female Socket



规格 Spec
S20x3/8F
S20x1/2F
S20x3/4F
S25x1/2F
S25x3/4F
S32x1/2F
S32x3/4F
S32x1"F
S40x1"F
S40x1¼"F
S50x1½"F
S63x2"F
S75x2 ½F
S90X3 "F
S110X4 "F

GA-4815

45° 弯头  
45° Elbow



规格 Spec
L20
L25
L32
L40
L50
L63
L75
L90
L110
L160

GA-4816

法兰  
Flange



规格 Spec
φ40
φ50
φ63
φ75
φ90
φ110
φ160



GA-4817

龙头座  
Double Elbow Wall-plate



规格 Spec  
L20x1/2Fx2  
L25x1/2Fx2

GA-4818

管帽  
End Cap



规格 Spec  
D20  
D25  
D32  
D40  
D50  
D63  
D75  
D90  
D110  
D160

GA-4830

太阳能活接三通  
Tee Of Solar Power



规格 Spec  
T20x1/2F

GA-4832

绕曲管  
Bridge pipe(long)



规格 Spec  
φ20  
φ25  
φ32

GA-4819

外牙活接  
Male PPR Union



规格 Spec  
φ20xM1/2  
φ25xM3/4  
φ25xM3/4  
φ32xM1"  
φ32xM3/4  
φ40xM1 1/4  
φ50xM1 1/2  
φ63xM2"

GA-4820

内牙活接  
Female PPR Union



规格 Spec  
φ20xF1/2  
φ25xF1/2  
φ25xF3/4  
φ32xF1"  
φ40xF1 1/4  
φ50xF1 1/2  
φ63xF2"

GA-4833

外丝堵头  
Male Plug



规格 Spec  
1/2M  
3/4M  
1"M

GA-4834

带边堵头  
Male Plug



规格 Spec  
1/2M  
3/4M  
1"M

GA-4821

全塑活接  
Plastic Union



规格 Spec  
φ20  
φ25  
φ32  
φ40  
φ50  
φ63

GA-4822

异径弯头  
Reducing Elbow



规格 Spec  
L25x20  
L32x20  
L32x25  
L40x20  
L40x25  
L40x32  
L50x25  
L50x32  
L50x40

GA-4834-1

带边堵头  
Male Plug



规格 Spec  
1/2M  
3/4M  
1"M

GA-4834-2

带边堵头  
Male Plug



规格 Spec  
1/2M  
3/4M  
1"M

GA-4828

太阳能直接  
Socket Of Solar Power



规格 Spec  
S20x1/2F  
S25x1/2F  
S25x3/4F

GA-4829

太阳能弯头  
Elbow Of Solar Power



规格 Spec  
L20x1/2F  
L25x1/2F  
L25x3/4F

GA-4837

过桥弯  
Bridge Pipe(short)



规格 Spec  
φ20  
φ25  
φ32

GA-4837-1

过桥弯  
Bridge Pipe(short)



规格 Spec  
φ20  
φ25  
φ32

GA-4835

手拧式堵头  
Handle Plug



规格 Spec  
1/2M

GA-4838

PPR过滤器  
Filtrator



规格 Spec  
φ40  
φ50  
φ63

GA-4826

PP-R 外牙球阀  
PP-R Male Union Ball Valve



规格 Spec  
φ20x1/2M  
φ25x3/4M  
φ25x1 "M  
φ32x1 "M  
φ40x1 1/4 "M

GA-4827

PP-R 内牙球阀  
PP-R Female Union Ball Valve



规格 Spec  
φ20x1/2F  
φ25x3/4F  
φ32x1 "F  
φ40x1 1/4 "F

GA-4841

PPR外牙分水器  
PPR Male Manifold



规格 Spec  
F3/4x63mmx2  
F3/4x63mmx3  
F3/4x63mmx4

GA-4820-1

双头活接  
Union



规格 Spec  
φ20  
φ25  
φ32  
φ40  
φ50  
φ63

GA-4836

美式暗阀  
Conceal Valve



规格 Spec  
φ20  
φ25  
φ32

GA-4840-1

全塑球阀  
PPR Plastic Ball Valve



规格 Spec  
φ20  
φ25  
φ32  
φ40  
φ50  
φ63

GA-4823

全塑活接球阀  
Union Plastic Ball Valve



规格 Spec  
φ20  
φ25  
φ32  
φ40  
φ50  
φ63

GA-4824

截止阀(老款)  
Gate Valve(cheap)



规格 Spec  
φ20  
φ25  
φ32  
φ40  
φ50  
φ63  
φ75  
φ90  
φ110

GA-4840-2

PP-R铁芯球阀  
PP-R Ball Valve(iron)



规格 Spec  
φ20  
φ25  
φ32  
φ40  
φ50  
φ63  
φ75  
φ90  
φ110

GA-4840-3

PP-R铁芯球阀  
PP-R Ball Valve(iron)



规格 Spec  
φ20  
φ25  
φ32  
φ40  
φ50  
φ63  
φ75  
φ90  
φ110

GA-4824-1

截止阀  
Gate Valve (Good)



规格 Spec  
φ20  
φ25  
φ32  
φ40  
φ50  
φ63  
φ75  
φ90  
φ110

GA-4825

PP-R 活接球阀  
PP-R Union Ball Valve



规格 Spec  
φ20  
φ25  
φ32  
φ40  
φ50  
φ63

GA-4842

PPR直式活接暖气阀  
Radiator Valve



规格 Spec  
S20x1/2F  
S25x3/4F

GA-4843

PPR角式活接暖气阀  
Radiator Angle Valve



规格 Spec  
L20x1/2M  
L25x3/4M

# GA58 TOOLS & ACCESSORIES SERIES

## 58 工具系列



GA-5801-1

热熔器(普通)  
Welding Machine(Nomal)



规格 Spec:  $\Phi$ 20-32,  $\Phi$ 20-63  
电压 Voltang: 220V/110V  
功率 Power: 700W/800W  
温度 Temperature: 0-300°C

GA-5801-2

热熔器(自动)  
Welding Machine(Automatic)



规格 Spec:  $\Phi$ 20-63  
电压 Voltang: 220V/110V  
功率 Power: 750W+750W 1500W  
温度 Temperature: 0-300°C

GA-5801-3

热熔器(自动)  
Welding Machine(Automatic)



规格 Spec:  $\Phi$ 20-63  
电压 Voltang: 220V/110V  
功率 Power: 750W+750W 1500W  
温度 Temperature: 0-300°C

GA-5801-4

热熔器(自动)  
Welding Machine(Automatic)



规格 Spec:  $\Phi$ 20-32,  $\Phi$ 20-63  
电压 Voltang: 220V/110V  
功率 Power: 700W/800W  
温度 Temperature: 0-300°C

GA-5801-17

热熔器(自动)  
Welding Machine(Automatic)



规格 Spec:  $\Phi$ 20-32,  $\Phi$ 20-63  
电压 Voltang: 220V/110V  
功率 Power: 700W/800W  
温度 Temperature: 0-300°C

GA-5801-19

热熔器(自动)  
Welding Machine(Automatic)



规格 Spec:  $\Phi$ 160  
电压 Voltang: 220V/110V  
功率 Power: 1500W  
温度 Temperature: 0-300°C

GA-5801-24

热熔器  
Welding Machine



规格 Spec:  $\Phi$ 75-110  
电压 Voltang: 220V/110V  
功率 Power: 1100W  
温度 Temperature: 0-300°C

GA-5801-24-1

热熔器(自动)  
Welding Machine(Automatic)



规格 Spec:  $\Phi$ 75-110  
电压 Voltang: 220V/110V  
功率 Power: 750W+750W 1500W  
温度 Temperature: 0-300°C

GA-5801-24-2

热熔器 (自动)  
Welding Machine(Automatic)



规格 Spec:  $\phi 75-110$   
电压 Voltang: 220V/110V  
功率 Power: 1100W  
温度 Temperature: 0-300°C

GA-5801-25

热熔器 (自动)  
Welding Machine(Automatic)



规格 Spec:  $\phi 20-63$   
电压 Voltang: 220V/110V  
功率 Power: 750W+750W 1500W  
温度 Temperature: 0-300°C

GA-5801-22-23

测压泵  
Pressure Test Pump



22(小 small)

23 (中 medium)

规格 Spec  
 $\phi 2.5$  Mpa

GA-5801-18

测压泵  
Pressure Test Pump



规格 Spec  
 $\phi 5.0$  Mpa

GA5801-26

热熔器 (数显)  
Welding Machine  
(Digital display screen)



规格 Spec:  $\phi 20-32, \phi 20-63$   
电压 Voltang: 220V/110V  
功率 Power: 800W/1000W  
温度 Temperature: 0-300°C

GA5801-27

热熔器 (自动)  
Welding Machine(Automatic)



规格 Spec:  $\phi 20-32, \phi 20-63$   
电压 Voltang: 220V/110V  
功率 Power: 800W/1000W  
温度 Temperature: 0-300°C

GA-5801-5

割刀  
PIPE CUTTER



规格 Spec  
 $\phi 3-28$   
 $\phi 14-63$   
 $\phi 50-125$

GA-5801-6

剪刀 (铝塑管专用)  
Scissor (For PEX pipe)



Normal

规格 Spec  
 $\phi 14-32$

GA5801-28

热熔器 (自动)  
Welding Machine(Automatic)



规格 Spec:  $\phi 20-32, \phi 20-63$   
电压 Voltang: 220V/110V  
功率 Power: 800W/1000W  
温度 Temperature: 0-300°C

GA-5801-20

两夹柱手推对焊机  
Hdpe Butt Fusion Machine



规格 Spec  
 $\phi 75-160$

GA-5801-7

剪刀 (PP-R 专用)  
Scissors (For PP-R Pipe)



规格 Spec  
 $\phi 16-40$

GA-5801-8

剪刀 (铝塑管专用)  
Scissors(For PEX pipe)



规格 Spec  
 $\phi 16-40$

GA-5801-21

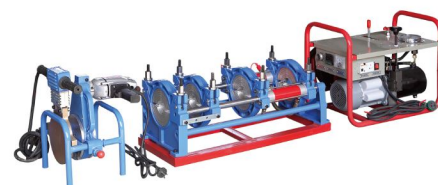
四夹柱手推对焊机  
Hdpe Butt Fusion Machine



规格 Spec  
 $\phi 63-160$   
 $\phi 63-200$   
 $\phi 90-250$

GA-5801-29

四夹柱液压对焊机  
Hdpe Butt Fusion Machine



规格 Spec  
 $\phi 63-160$   
 $\phi 63-200$   
 $\phi 90-250$

GA-5801-9

快速剪刀  
Simple Scissor



-16

规格 Spec  
 $\phi 14-32$

GA-5801-12

精品剪刀 (铝塑管专用)  
Simple Scissor



Heavy

规格 Spec  
 $\phi 16-40$

GA-5801-11

快速剪刀  
Scissor (For PPR/PVC pipe)



规格 Spec  
φ16-40

GA-5801-14

卡压式专用钳  
Pressing Clamp



规格 Spec  
φ16-32

GA-5809

整圆器  
Round maker



规格 Spec  
φ16  
φ18  
φ20  
φ25  
φ32

GA-5812

弹簧管  
Spring



规格 Spec  
φ16  
φ18  
φ20  
φ25  
φ32

GA-5801-15

PPR 剪刀 (大)  
PPR Cutter(Big)



规格 Spec  
φ14-63

GA-5805

金属抱卡  
Metal Hold Clip



规格 Spec  
φ20 φ75  
φ25 φ90  
φ32 φ100  
φ40 φ110  
φ50 φ125  
φ63 φ160

GA-B01

生料带  
PTFE Teflon Tape



规格 Spec  
12mmx0.075mmx8m  
12mmx0.075mmx10m  
12mmx0.075mmx12m  
Density:0.20-0.30g/cm<sup>3</sup>  
Thickness:0.075-0.1mm  
Length:8-50m

GA-B02

生料带  
PTFE Teflon Tape



规格 Spec  
12mmx0.075mmx10m  
12mmx0.075mmx12m  
12mmx0.075mmx15m  
12mmx0.075mmx18m  
Density:0.2-0.5g/cm<sup>3</sup>  
Thickness:0.075-0.1mm  
Length:10-50m

GA-5806

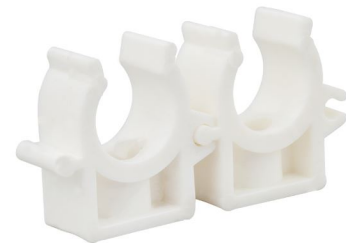
U 型低角管卡扣  
PPR PIPE Clip



规格 Spec  
φ16  
φ20  
φ25  
φ32

GA-5807

PPR 排卡  
PPR Buckle Clip



规格 Spec  
φ16  
φ20  
φ25  
φ32

GA-B03

生料带  
PTFE Teflon Tape



规格 Spec  
19mmx0.075mmx15m  
19mmx0.075mmx20m  
19mmx0.1mmx18m  
19mmx0.1mmx20m  
Density:0.2-1.2g/cm<sup>3</sup>  
Thickness:0.075-0.2mm  
Length:10-50m

GA-B04

生料带  
PTFE Teflon Tape



规格 Spec  
19mmx0.075mmx30m  
19mmx0.075mmx40m  
19mmx0.2mmx15m  
19mmx0.2mmx20m  
Density:0.2-1.2g/cm<sup>3</sup>  
Thickness:0.075-0.2mm  
Length:10-50m

GA-5807-1

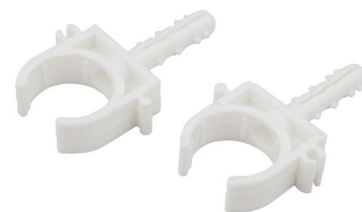
PPR 带盖排卡  
PPR Buckle Clip(with cover)



规格 Spec  
φ16  
φ20  
φ25  
φ32

GA-5807-2

带膨胀脚 PPR 排卡  
PPR Buckle Clip (With Nail)



规格 Spec  
φ16  
φ20  
φ25  
φ32

GA-B05

生料带  
PTFE Teflon Tape



规格 Spec  
25mmx0.075mmx25m  
25mmx0.075mmx30m  
25mmx0.1mmx40m  
25mmx0.2mmx35m  
Density:0.2-1.2g/cm<sup>3</sup>  
Thickness:0.075-0.2mm  
Length:10-50m

GA-B06

生料带  
PTFE Teflon Tape



规格 Spec  
12mmx0.075mmx10m  
12mmx0.075mmx12m  
12mmx0.075mmx15m  
Density:0.20-0.35g/cm<sup>3</sup>  
Thickness:0.075-0.1mm  
Length:10-50m

服务热线 400-188-7316



# 奇爱实业 水暖产品系列

PLUMBING PRODUCTS SERIES

欧盟CE认证 ISO9001:2008认证 PICC产品责任保险

经销商

奇爱集团有限公司  
QIAI GROUP CO.,LTD.

浙江奇爱管业有限公司  
ZHEJIANG QIAI TUBING INDUSTRY CO.,LTD.

浙江奇爱实业有限公司  
ZHEJIANG QIAI INDUSTRY CO.,LTD.

厂址: 浙江省诸暨市店口镇解放路831号

Add: NO. 831 JIEFANG ROAD, DIANKOU AREA, ZHUJI CITY, ZHEJIANG, CHINA

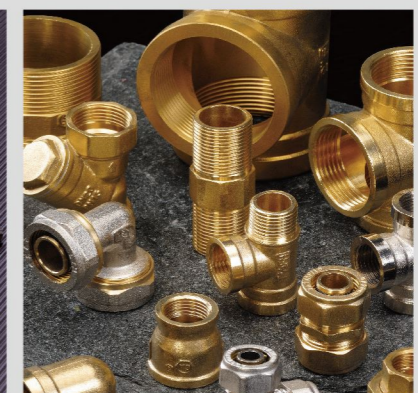
邮编(P.C.): 311814

邮箱(E-mail): qiai@qiaigroup.com

网址(Website): www.qiaigroup.com



扫一扫访问我们的  
网站获取更多信息



奇爱集团有限公司  
QIAI GROUP CO.,LTD.